

# Mighty Hoop 9" Hoop Series

## Brother & Baby Lock 1, 6, and 10 Needle Machines

Janome, Elna, Sai, Avance 12 Needle, Ricoma 10 Needle, Husqvarna Machines (brackets may look slightly different)

**Brother or Baby Lock** machine owners, you will need to use the "A" Arm with the 9" Hoop Series

**9x3" 9x4.25" 9x5" 9x6"**

**Figure 1.**



## Attaching Brackets to the 9" Mighty Hoop Series

- Place the hoop on a table as seen in Figure 1:
  - For the 9x3" and 9x4.25" Mighty Hoop, the orange warning label will be on the right side of the hoop.
  - For the 9x5" and 9x6" Mighty Hoop, the orange warning label will be at the top of the hoop, with the pinch hazard label at the bottom.
- Position the brackets:
  - Place the "L" bracket with the slot over the three holes on the left side of the hoop.
  - Place the "R" bracket with the hole over the three holes on the right side of the hoop.
  - Make sure the labels on the brackets are facing up so they can be seen from the top side.
- Attach the brackets using six pan head 8/32 x 3/8" screws.
  - Insert the screws from the top side of the hoop through the brackets.
  - Secure them with the lock nuts on the bottom side of the hoop.

**Figure 2.**

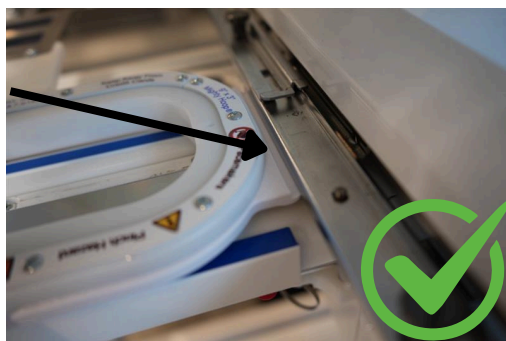


## Hoop Orientation

- Position the bottom ring so that the long thumb tab is at the front of the machine.
- Make sure the notched side of the bottom ring is at the back of the machine.
- Place the top hoop so the warning label is at the back (or on right side) of the machine.
- The notched side of the bottom ring will be close to, and may even extend slightly under the back frame/pantograph of the machine.
- Refer to Figures 2, 3, and 4 for correct and incorrect positioning.

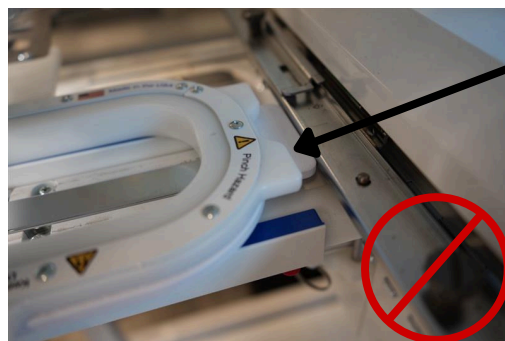
**Figure 3.**

Notched side loaded first at the back of the machine. (Correct)



**Figure 4.**

Long tab of the bottom ring is at the back of the machine. (Incorrect)



## Adjustable FreeStyle Fixture on the Portable Mounting Base

The Adjustable FreeStyle Fixture and Portable Mounting Base are great accessories for all the hoops in the 9" Mighty Hoop Series. The Adjustable FreeStyle Fixture securely holds the bottom ring and stabilizer in place, while making it easy to slide your garment or item onto the Fixture. This setup not only simplifies the hooping process but also ensures consistent, accurate placement every time, saving you time and reducing errors. Great for sleeves, pant legs, tote bags, beanies etc.

**Adjustable FreeStyle Fixture \$140 - Portable Mounting Base \$60**

**30 Day Money Back Guarantee**

**3 Year Limited Warranty**

**Midwest Products, Inc.**

**(262) 257- 0930 - [hoopmaster.com](http://hoopmaster.com)**



**Join Our Socials**  
Scan the QR Code  
or visit [hoopmaster.com/links](http://hoopmaster.com/links)

Made in the USA



Patented  
9" MH Series (8/27/25)